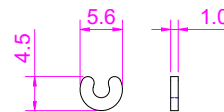
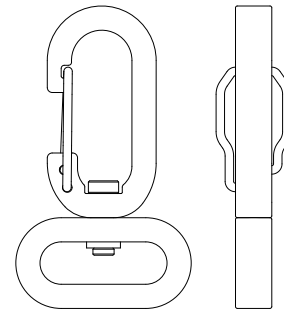


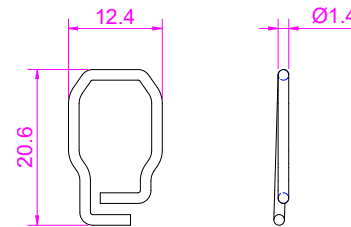
RIVET



C-RING

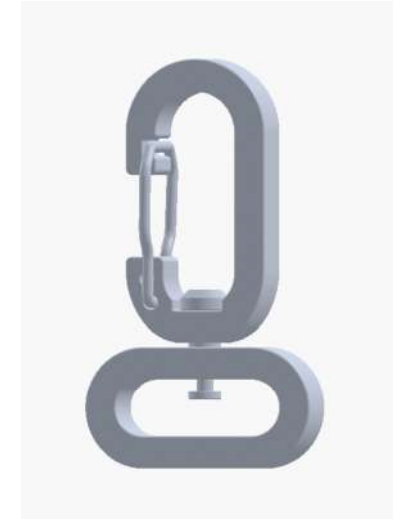


ASSEMBLY VIEW
SCALE 1:1



SPRING

3D DRAWING



NOTES

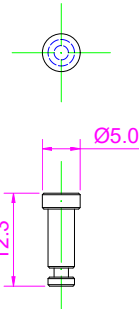
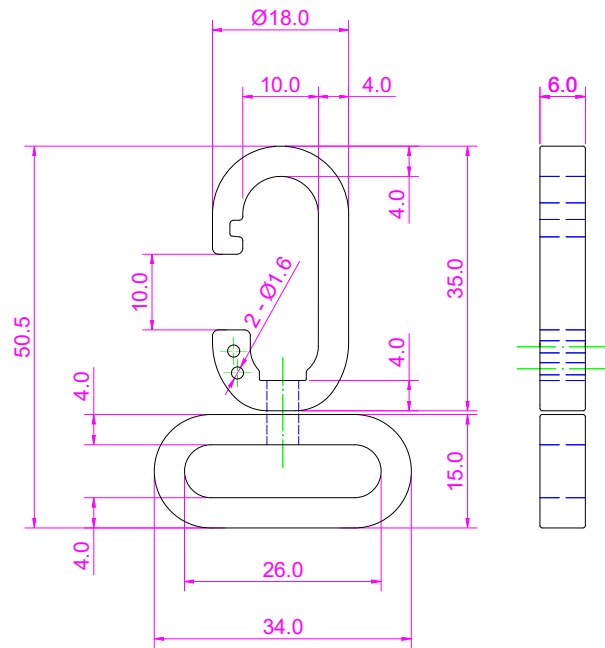
1. BURR OF BRACKET SHOULD BE MINIMIZED.
2. BRACKET SHOULD BE FREE OF SHARP EDGES.
3. UNSPECIFIED RADIUS WOULD BE 0.5MM.
4. IMPORTANT PARTS ARE MARKED BY ASTERISK.
5. SAMPLE APPROVAL IS REQUIRED.

GENERAL TOLERANCES (mm)

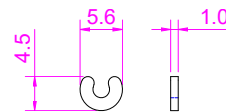
0	~ 10	+/- 0.20
11	~ 25	+/- 0.25
26	~ 38	+/- 0.30
39	~ 50	+/- 0.40
OVER 50		+/- 0.50

INFORMATION

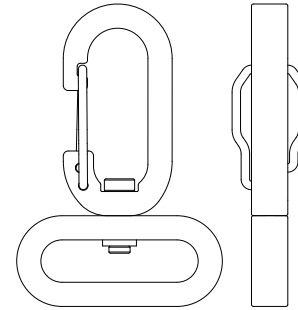
ITEM NO.	E609 - 20
DESCRIPTION	EDGE SWIVEL HOOK
MATERIAL	ALU6061 - T6, T = 6MM
WEIGHT	8.90g
DATE	01/AUG/2024



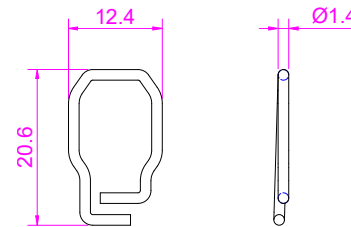
RIVET



C-RING

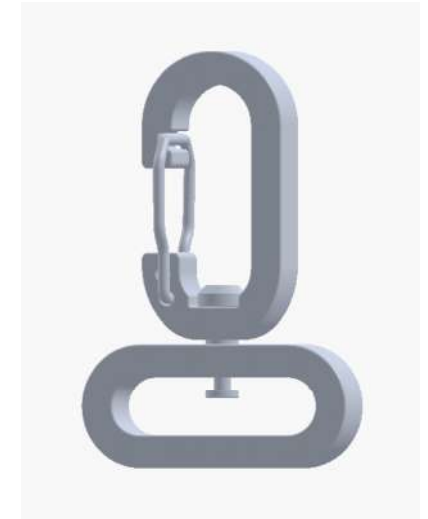


ASSEMBLY VIEW
SCALE 1:1



SPRING

3D DRAWING



NOTES

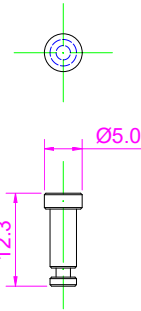
1. BURR OF BRACKET SHOULD BE MINIMIZED.
2. BRACKET SHOULD BE FREE OF SHARP EDGES.
3. UNSPECIFIED RADIUS WOULD BE 0.5MM.
4. IMPORTANT PARTS ARE MARKED BY ASTERISK.
5. SAMPLE APPROVAL IS REQUIRED.

GENERAL TOLERANCES (mm)

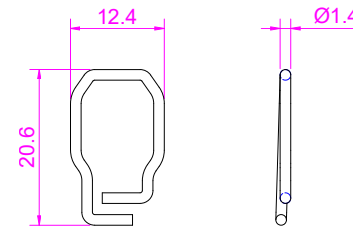
0	~ 10	+/- 0.20
11	~ 25	+/- 0.25
26	~ 38	+/- 0.30
39	~ 50	+/- 0.40
OVER 50		+/- 0.50

INFORMATION

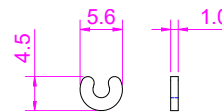
ITEM NO.	E609 - 25
DESCRIPTION	EDGE SWIVEL HOOK
MATERIAL	ALU6061 - T6, T = 6MM
WEIGHT	9.60g
DATE	01/AUG/2024



RIVET



SPRING



C-RING

A 3D rendering of a mechanical component, likely a part of a prosthetic arm. It features a vertical U-shaped structure with a handle on the left side, mounted on a horizontal base. The component is shown in a light blue color against a white background.

1. BURR OF BRACKET SHOULD BE MINIMIZED.
2. BRACKET SHOULD BE FREE OF SHARP EDGES.
3. UNSPECIFIED RADIUS WOULD BE 0.5MM.
4. IMPORTANT PARTS ARE MARKED BY ASTERISK.
5. SAMPLE APPROVAL IS REQUIRED.

0 ~ 10	+/- 0.20
11 ~ 25	+/- 0.25
26 ~ 38	+/- 0.30
39 ~ 50	+/- 0.40
OVER 50	+/- 0.50

ITEM NO.	E609 - 38
DESCRIPTION	EDGE SWIVEL HOOK
MATERIAL	ALU6061 - T6, T = 6MM
WEIGHT	11.20g
DATE	01/AUG/2024