

3D DRAWING



NOTES

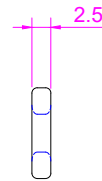
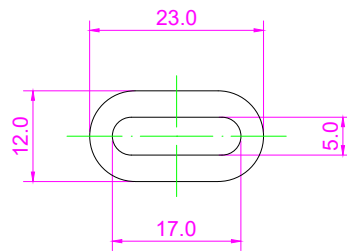
1. BURR OF BRACKET SHOULD BE MINIMIZED.
2. BRACKET SHOULD BE FREE OF SHARP EDGES.
3. UNSPECIFIED RADIUS WOULD BE 0.5MM.
4. IMPORTANT PARTS ARE MARKED BY ASTERISK.
5. SAMPLE APPROVAL IS REQUIRED.

GENERAL TOLERANCES (mm)

0	~	10	+/- 0.20
11	~	25	+/- 0.25
26	~	38	+/- 0.30
39	~	50	+/- 0.40
OVER 50			+/- 0.50

INFORMATION

ITEM NO.	E308 - 10
DESCRIPTION	EDGE OVAL LOOP
MATERIAL	ALU6061 - T6, T = 2.5MM
WEIGHT	0.80g
DATE	13/JUN/2025



3D DRAWING



NOTES

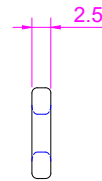
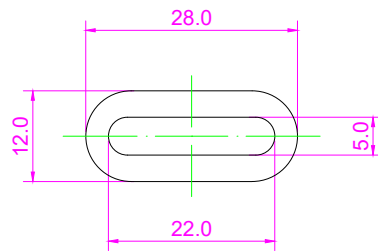
1. BURR OF BRACKET SHOULD BE MINIMIZED.
2. BRACKET SHOULD BE FREE OF SHARP EDGES.
3. UNSPECIFIED RADIUS WOULD BE 0.5MM.
4. IMPORTANT PARTS ARE MARKED BY ASTERISK.
5. SAMPLE APPROVAL IS REQUIRED.

GENERAL TOLERANCES (mm)

0	~	10	+/- 0.20
11	~	25	+/- 0.25
26	~	38	+/- 0.30
39	~	50	+/- 0.40
OVER 50			+/- 0.50

INFORMATION

ITEM NO.	E308 - 15
DESCRIPTION	EDGE OVAL LOOP
MATERIAL	ALU6061 - T6, T = 2.5MM
WEIGHT	1.00g
DATE	13/JUN/2025



3D DRAWING



NOTES

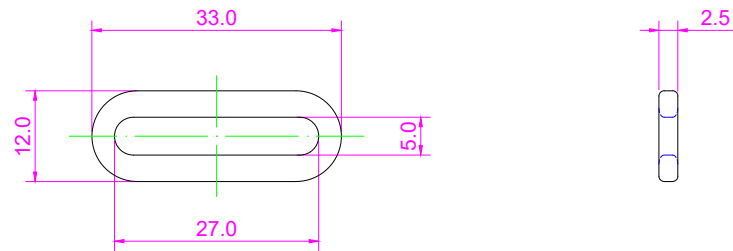
1. BURR OF BRACKET SHOULD BE MINIMIZED.
2. BRACKET SHOULD BE FREE OF SHARP EDGES.
3. UNSPECIFIED RADIUS WOULD BE 0.5MM.
4. IMPORTANT PARTS ARE MARKED BY ASTERISK.
5. SAMPLE APPROVAL IS REQUIRED.

GENERAL TOLERANCES (mm)

0	~	10	+/- 0.20
11	~	25	+/- 0.25
26	~	38	+/- 0.30
39	~	50	+/- 0.40
OVER 50			+/- 0.50

INFORMATION

ITEM NO.	E308 - 20
DESCRIPTION	EDGE OVAL LOOP
MATERIAL	ALU6061 - T6, T = 2.5MM
WEIGHT	1.30g
DATE	13/JUN/2025



3D DRAWING



NOTES

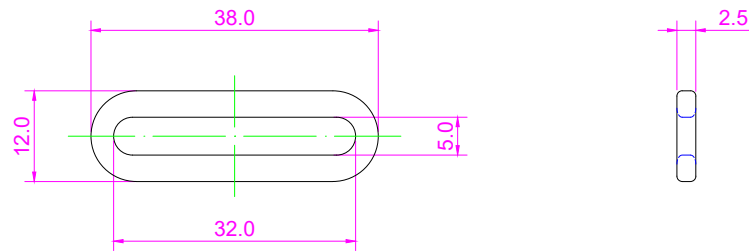
1. BURR OF BRACKET SHOULD BE MINIMIZED.
2. BRACKET SHOULD BE FREE OF SHARP EDGES.
3. UNSPECIFIED RADIUS WOULD BE 0.5MM.
4. IMPORTANT PARTS ARE MARKED BY ASTERISK.
5. SAMPLE APPROVAL IS REQUIRED.

GENERAL TOLERANCES (mm)

0	~	10	+/- 0.20
11	~	25	+/- 0.25
26	~	38	+/- 0.30
39	~	50	+/- 0.40
OVER 50			+/- 0.50

INFORMATION

ITEM NO.	E308 - 25
DESCRIPTION	EDGE OVAL LOOP
MATERIAL	ALU6061 - T6, T = 2.5MM
WEIGHT	1.50g
DATE	13/JUN/2025



3D DRAWING



NOTES

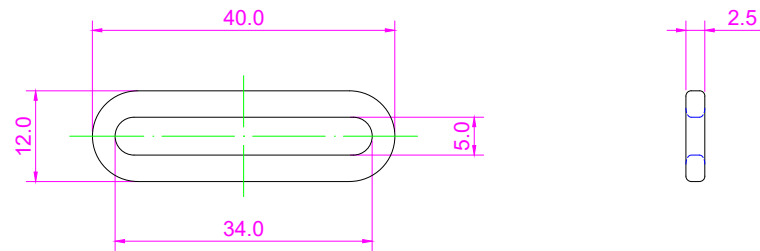
1. BURR OF BRACKET SHOULD BE MINIMIZED.
2. BRACKET SHOULD BE FREE OF SHARP EDGES.
3. UNSPECIFIED RADIUS WOULD BE 0.5MM.
4. IMPORTANT PARTS ARE MARKED BY ASTERISK.
5. SAMPLE APPROVAL IS REQUIRED.

GENERAL TOLERANCES (mm)

0	~	10	+/- 0.20
11	~	25	+/- 0.25
26	~	38	+/- 0.30
39	~	50	+/- 0.40
OVER 50			+/- 0.50

INFORMATION

ITEM NO.	E308 - 30
DESCRIPTION	EDGE OVAL LOOP
MATERIAL	ALU6061 - T6, T = 2.5MM
WEIGHT	1.70g
DATE	13/JUN/2025



3D DRAWING



NOTES

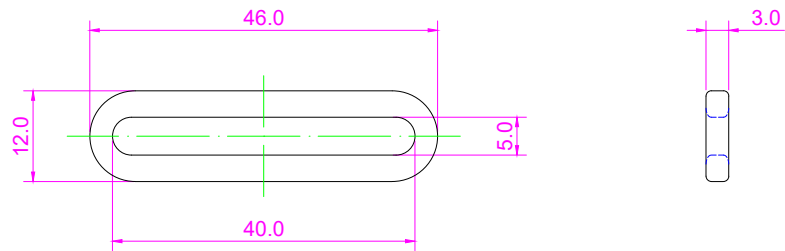
1. BURR OF BRACKET SHOULD BE MINIMIZED.
2. BRACKET SHOULD BE FREE OF SHARP EDGES.
3. UNSPECIFIED RADIUS WOULD BE 0.5MM.
4. IMPORTANT PARTS ARE MARKED BY ASTERISK.
5. SAMPLE APPROVAL IS REQUIRED.

GENERAL TOLERANCES (mm)

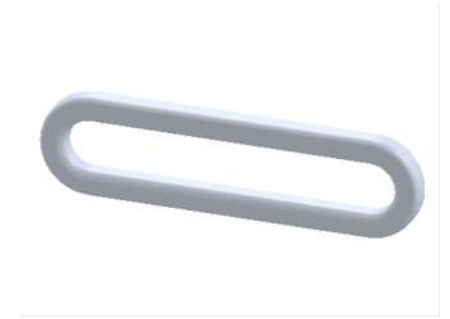
0	~	10	+/- 0.20
11	~	25	+/- 0.25
26	~	38	+/- 0.30
39	~	50	+/- 0.40
OVER 50			+/- 0.50

INFORMATION

ITEM NO.	E308 - 32
DESCRIPTION	EDGE OVAL LOOP
MATERIAL	ALU6061 - T6, T = 2.5MM
WEIGHT	1.80g
DATE	13/JUN/2025



3D DRAWING



NOTES

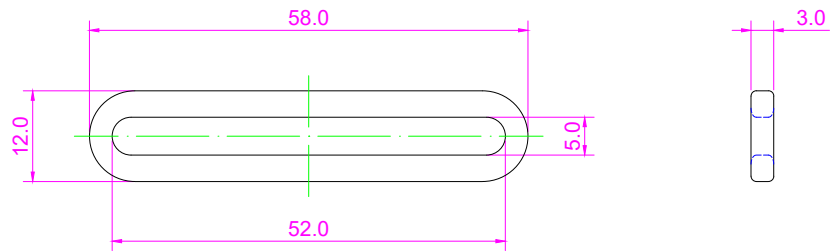
1. BURR OF BRACKET SHOULD BE MINIMIZED.
2. BRACKET SHOULD BE FREE OF SHARP EDGES.
3. UNSPECIFIED RADIUS WOULD BE 0.5MM.
4. IMPORTANT PARTS ARE MARKED BY ASTERISK.
5. SAMPLE APPROVAL IS REQUIRED.

GENERAL TOLERANCES (mm)

0	~	10	+/- 0.20
11	~	25	+/- 0.25
26	~	38	+/- 0.30
39	~	50	+/- 0.40
OVER 50			+/- 0.50

INFORMATION

ITEM NO.	E308 - 38
DESCRIPTION	EDGE OVAL LOOP
MATERIAL	ALU6061 - T6, T = 3MM
WEIGHT	2.50g
DATE	13/JUN/2025



3D DRAWING



NOTES

1. BURR OF BRACKET SHOULD BE MINIMIZED.
2. BRACKET SHOULD BE FREE OF SHARP EDGES.
3. UNSPECIFIED RADIUS WOULD BE 0.5MM.
4. IMPORTANT PARTS ARE MARKED BY ASTERISK.
5. SAMPLE APPROVAL IS REQUIRED.

GENERAL TOLERANCES (mm)

0	~	10	+/- 0.20
11	~	25	+/- 0.25
26	~	38	+/- 0.30
39	~	50	+/- 0.40
OVER 50			+/- 0.50

INFORMATION

ITEM NO.	E308 - 50
DESCRIPTION	EDGE OVAL LOOP
MATERIAL	ALU6061 - T6, T = 3MM
WEIGHT	3.10g
DATE	13/JUN/2025