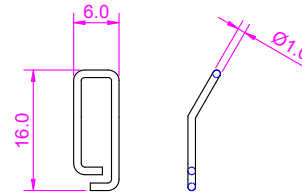
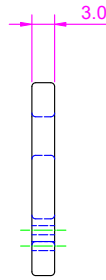
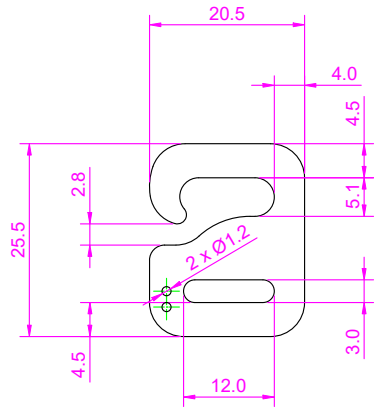


**ASSEMBLY VIEW**

SCALE 1:1



**SPRING**

**3D DRAWING**



**NOTES**

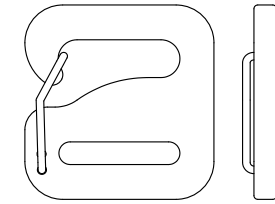
1. BURR OF BRACKET SHOULD BE MINIMIZED.
2. BRACKET SHOULD BE FREE OF SHARP EDGES.
3. UNSPECIFIED RADIUS WOULD BE 0.5MM.
4. IMPORTANT PARTS ARE MARKED BY ASTERISK.
5. SAMPLE APPROVAL IS REQUIRED.

**GENERAL TOLERANCES (mm)**

0	~ 10	+/- 0.20
11	~ 25	+/- 0.25
26	~ 38	+/- 0.30
39	~ 50	+/- 0.40
OVER 50		+/- 0.50

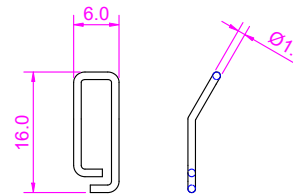
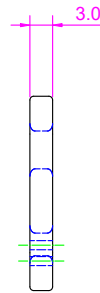
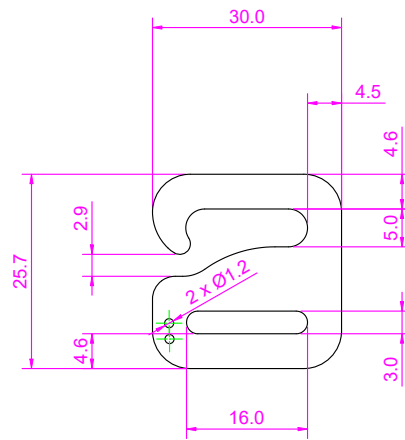
**INFORMATION**

ITEM NO.	H122 - 10
DESCRIPTION	VOYAGER SINGLE HOOK/SPRING
MATERIAL	ALU6061 - T6, T = 3MM
WEIGHT	3.00g
DATE	02/DEC/2025



**ASSEMBLY VIEW**

SCALE 1:1



**SPRING**

**3D DRAWING**



**NOTES**

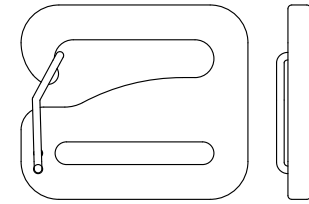
1. BURR OF BRACKET SHOULD BE MINIMIZED.
2. BRACKET SHOULD BE FREE OF SHARP EDGES.
3. UNSPECIFIED RADIUS WOULD BE 0.5MM.
4. IMPORTANT PARTS ARE MARKED BY ASTERISK.
5. SAMPLE APPROVAL IS REQUIRED.

**GENERAL TOLERANCES (mm)**

0	~ 10	+/- 0.20
11	~ 25	+/- 0.25
26	~ 38	+/- 0.30
39	~ 50	+/- 0.40
	OVER 50	+/- 0.50

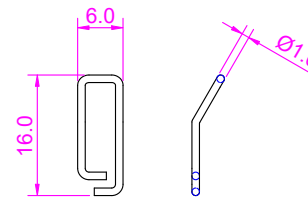
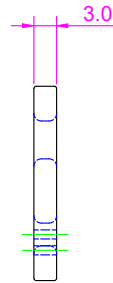
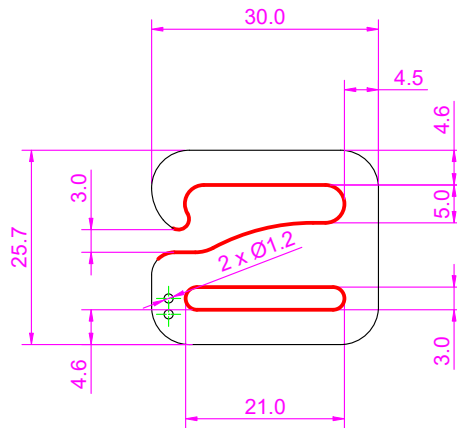
**INFORMATION**

ITEM NO.	H122 - 15
DESCRIPTION	VOYAGER SINGLE HOOK/SPRING
MATERIAL	ALU6061 - T6, T = 3MM
WEIGHT	4.20g
DATE	10/APR/2025

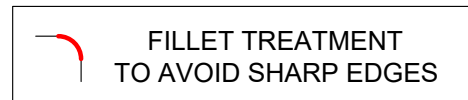


**ASSEMBLY VIEW**

SCALE 1:1



**SPRING**



**3D DRAWING**



**NOTES**

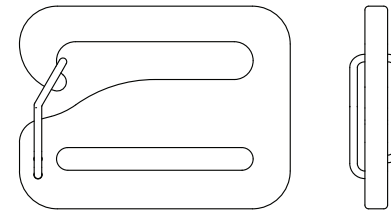
1. BURR OF BRACKET SHOULD BE MINIMIZED.
2. BRACKET SHOULD BE FREE OF SHARP EDGES.
3. UNSPECIFIED RADIUS WOULD BE 0.5MM.
4. IMPORTANT PARTS ARE MARKED BY ASTERISK.
5. SAMPLE APPROVAL IS REQUIRED.
6. RED LINE WILL BE APPLIED RADIUS TREATMENT.

**GENERAL TOLERANCES (mm)**

0	~ 10	+/- 0.20
11	~ 25	+/- 0.25
26	~ 38	+/- 0.30
39	~ 50	+/- 0.40
	OVER 50	+/- 0.50

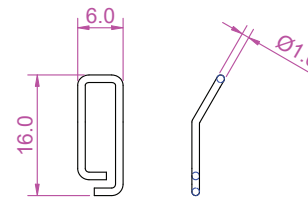
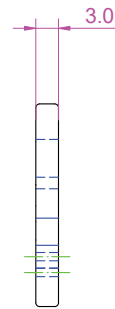
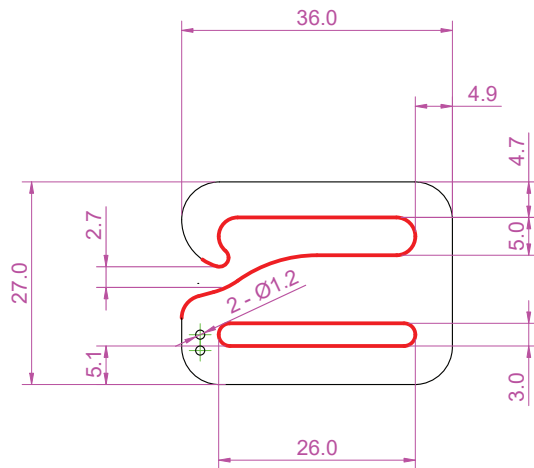
**INFORMATION**

ITEM NO.	H122 - 20
DESCRIPTION	VOYAGER SINGLE HOOK/SPRING
MATERIAL	ALU6061 - T6, T = 3MM
WEIGHT	3.98g
DATE	10/APR/2025



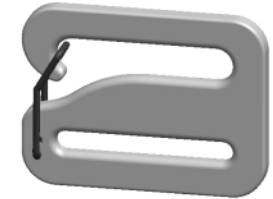
**ASSEMBLY VIEW**

SCALE 1:1



**SPRING**

**3D DRAWING**



**NOTES**

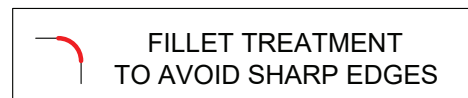
1. BURR OF BRACKET SHOULD BE MINIMIZED.
2. BRACKET SHOULD BE FREE OF SHARP EDGES.
3. UNSPECIFIED RADIUS WOULD BE 0.5MM.
4. IMPORTANT PARTS ARE MARKED BY ASTERISK.
5. SAMPLE APPROVAL IS REQUIRED.
6. RED LINE WILL BE APPLIED FILLET TREATMENT.

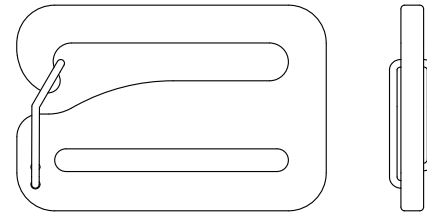
**GENERAL TOLERANCES (mm)**

0	~ 10	+/- 0.20
11	~ 25	+/- 0.25
26	~ 38	+/- 0.30
39	~ 50	+/- 0.40
OVER 50		+/- 0.50

**INFORMATION**

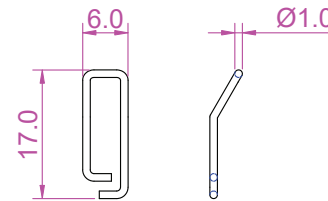
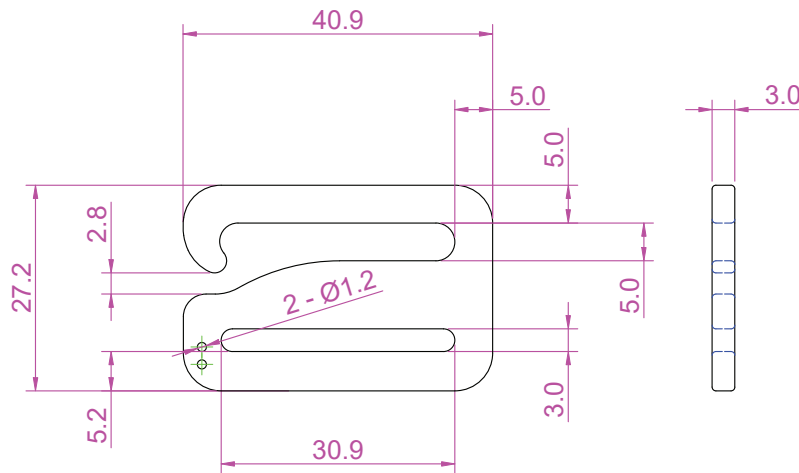
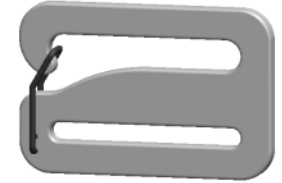
ITEM NO.	H122 - 25
DESCRIPTION	VOYAGER SINGLE HOOK/SPRING
MATERIAL	ALU6061 - T6, T = 3MM
WEIGHT	5.60g
DATE	10/MAY/2024





**ASSEMBLY VIEW**  
SCALE 1:1

**3D DRAWING**



**SPRING**

**NOTES**

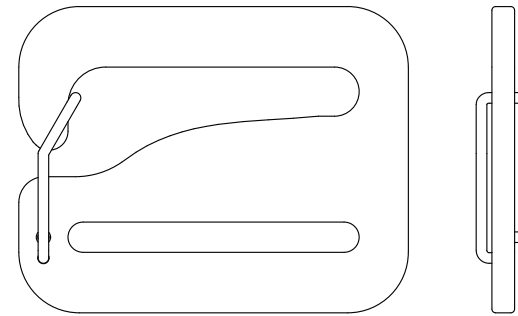
1. BURR OF BRACKET SHOULD BE MINIMIZED.
2. BRACKET SHOULD BE FREE OF SHARP EDGES.
3. UNSPECIFIED RADIUS WOULD BE 0.5MM.
4. IMPORTANT PARTS ARE MARKED BY ASTERISK.
5. SAMPLE APPROVAL IS REQUIRED.

**GENERAL TOLERANCES (mm)**

0	~ 10	+/- 0.20
11	~ 25	+/- 0.25
26	~ 38	+/- 0.30
39	~ 50	+/- 0.40
OVER 50		+/- 0.50

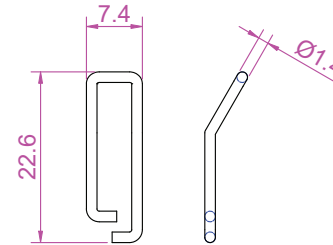
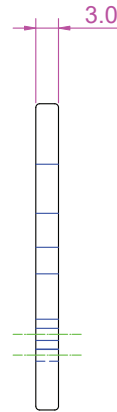
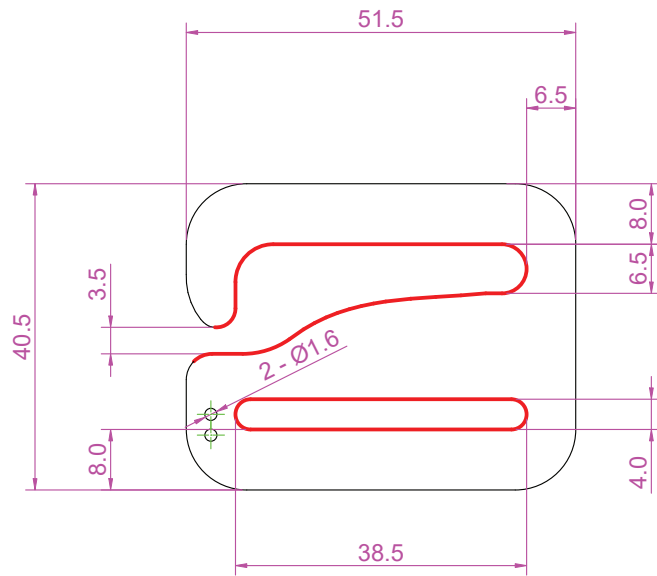
**INFORMATION**

ITEM NO.	H122 - 30
DESCRIPTION	VOYAGER SINGLE HOOK/SPRING
MATERIAL	ALU6061 - T6, T = 3MM
WEIGHT	6.30g
DATE	03/JUN/2025



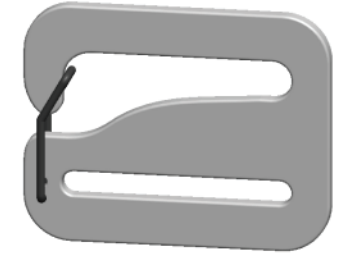
**ASSEMBLY VIEW**

SCALE 1:1



**SPRING**

**3D DRAWING**



**NOTES**

1. BURR OF BRACKET SHOULD BE MINIMIZED.
2. BRACKET SHOULD BE FREE OF SHARP EDGES.
3. UNSPECIFIED RADIUS WOULD BE 0.5MM.
4. IMPORTANT PARTS ARE MARKED BY ASTERISK.
5. SAMPLE APPROVAL IS REQUIRED.
6. RED LINE WILL BE APPLIED FILLET TREATMENT.

**GENERAL TOLERANCES (mm)**

0	~ 10	+/- 0.20
11	~ 25	+/- 0.25
26	~ 38	+/- 0.30
39	~ 50	+/- 0.40
OVER 50		+/- 0.50

**INFORMATION**

ITEM NO.	H122 - 38
DESCRIPTION	VOYAGER SINGLE HOOK/SPRING
MATERIAL	ALU6061 - T6, T = 3MM
WEIGHT	12.00g
DATE	10/APR/2025

