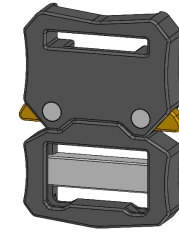
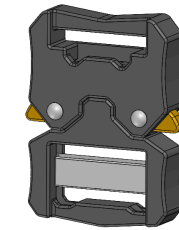


3D DRAWING

FRONT SIDE



BACK SIDE



NOTES

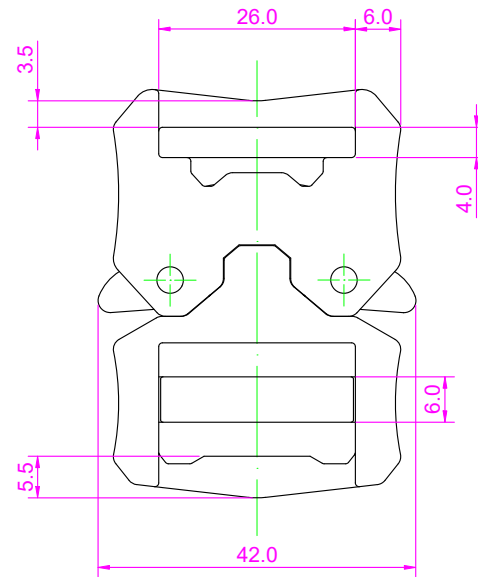
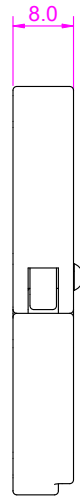
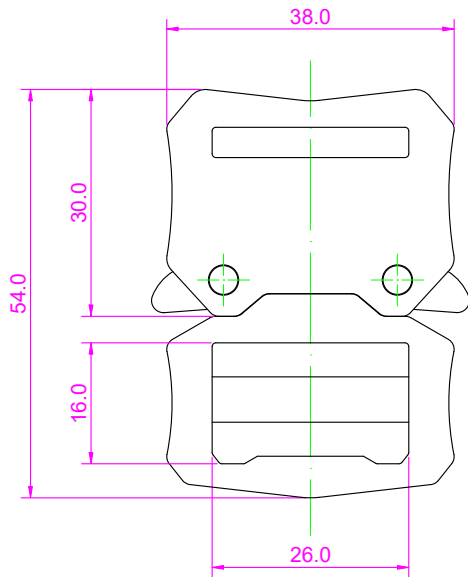
1. BURR OF BRACKET SHOULD BE MINIMIZED.
2. BRACKET SHOULD BE FREE OF SHARP EDGES.
3. UNSPECIFIED RADIUS WOULD BE 0.5MM.
4. IMPORTANT PARTS ARE MARKED BY ASTERISK.
5. SAMPLE APPROVAL IS REQUIRED.

GENERAL TOLERANCES (mm)

0 ~ 10	+/- 0.20
11 ~ 25	+/- 0.25
26 ~ 38	+/- 0.30
39 ~ 50	+/- 0.40
OVER 50	+/- 0.50

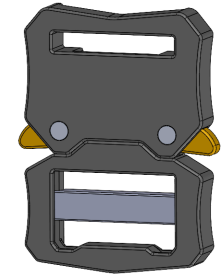
INFORMATION

ITEM NO.	B115 - 20
DESCRIPTION	ARCTIC DUAL BELT
MATERIAL	ALU6061 - T6, T = 8MM
WEIGHT	17.30g
DATE	11/DEC/2025

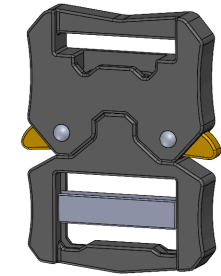


3D DRAWING

FRONT SIDE



BACK SIDE



NOTES

1. BURR OF BRACKET SHOULD BE MINIMIZED.
2. BRACKET SHOULD BE FREE OF SHARP EDGES.
3. UNSPECIFIED RADIUS WOULD BE 0.5MM.
4. IMPORTANT PARTS ARE MARKED BY ASTERISK.
5. SAMPLE APPROVAL IS REQUIRED.

GENERAL TOLERANCES (mm)

0 ~ 10	+/- 0.20
11 ~ 25	+/- 0.25
26 ~ 38	+/- 0.30
39 ~ 50	+/- 0.40
OVER 50	+/- 0.50

INFORMATION

ITEM NO.	B115 - 25
DESCRIPTION	ARCTIC DUAL BELT
MATERIAL	ALU6061 - T6, T = 8MM
WEIGHT	26.60g
DATE	11/DEC/2025