

3D DRAWING



NOTES

1. BURR OF BRACKET SHOULD BE MINIMIZED.
2. BRACKET SHOULD BE FREE OF SHARP EDGES.
3. UNSPECIFIED RADIUS WOULD BE 0.5MM.
4. IMPORTANT PARTS ARE MARKED BY ASTERISK.
5. SAMPLE APPROVAL IS REQUIRED.

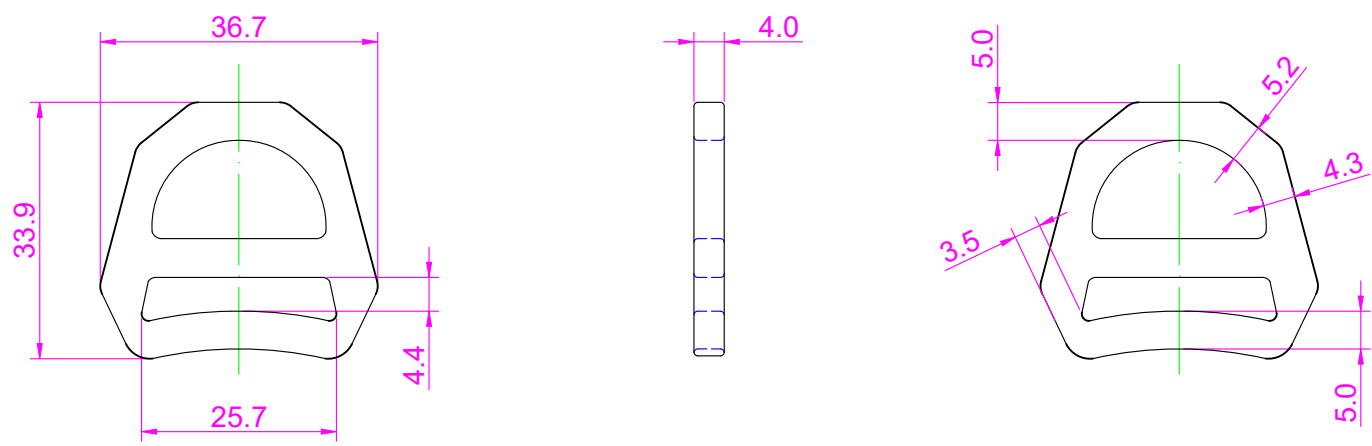
GENERAL TOLERANCES (mm)

0	~ 10	+/- 0.20
11	~ 25	+/- 0.25
26	~ 38	+/- 0.30
39	~ 50	+/- 0.40
	OVER 50	+/- 0.50

INFORMATION

ITEM NO.	K113 - 20
DESCRIPTION	IGLOO DOUBLE D-RING
MATERIAL	ALU6061 - T6, T = 4MM
WEIGHT	4.76g
DATE	19/APR/2024

3D DRAWING



NOTES

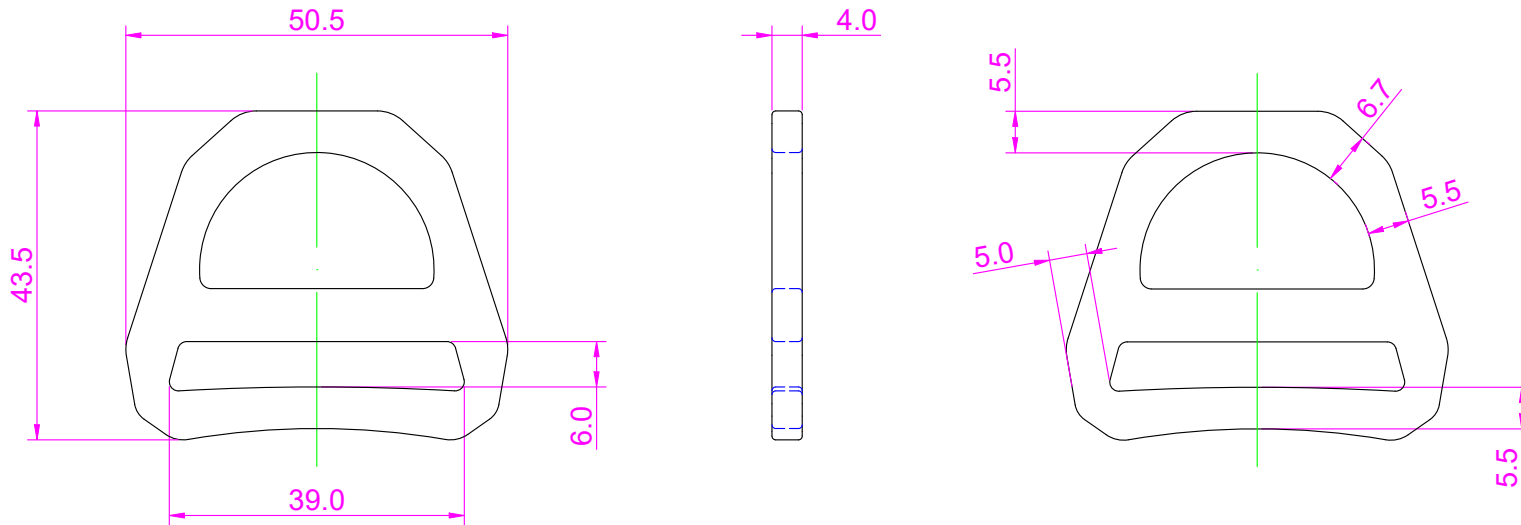
1. BURR OF BRACKET SHOULD BE MINIMIZED.
2. BRACKET SHOULD BE FREE OF SHARP EDGES.
3. UNSPECIFIED RADIUS WOULD BE 0.5MM.
4. IMPORTANT PARTS ARE MARKED BY ASTERISK.
5. SAMPLE APPROVAL IS REQUIRED.

GENERAL TOLERANCES (mm)

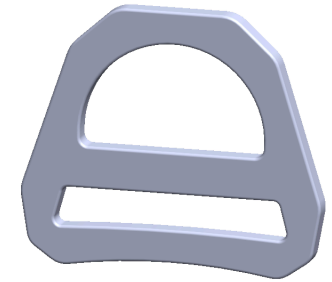
0	~ 10	+/- 0.20
11	~ 25	+/- 0.25
26	~ 38	+/- 0.30
39	~ 50	+/- 0.40
	OVER 50	+/- 0.50

INFORMATION

ITEM NO.	K113 - 25
DESCRIPTION	IGLOO DOUBLE D-RING
MATERIAL	ALU6061 - T6, T = 4MM
WEIGHT	6.32g
DATE	19/APR/2024



3D DRAWING



NOTES

1. BURR OF BRACKET SHOULD BE MINIMIZED.
2. BRACKET SHOULD BE FREE OF SHARP EDGES.
3. UNSPECIFIED RADIUS WOULD BE 0.5MM.
4. IMPORTANT PARTS ARE MARKED BY ASTERISK.
5. SAMPLE APPROVAL IS REQUIRED.

GENERAL TOLERANCES (mm)

0	~ 10	+/- 0.20
11	~ 25	+/- 0.25
26	~ 38	+/- 0.30
39	~ 50	+/- 0.40
	OVER 50	+/- 0.50

INFORMATION

ITEM NO.	K113 - 38
DESCRIPTION	IGLOO DOUBLE D-RING
MATERIAL	ALU6061 - T6, T = 4MM
WEIGHT	11.60g
DATE	26/NOV/2024